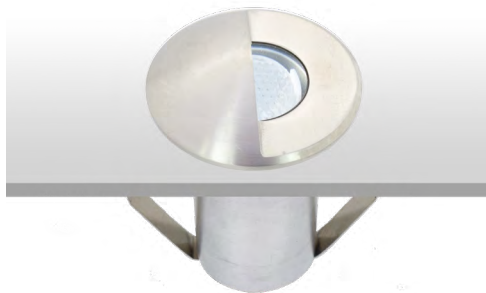


FP 50 A

Incasso da pavimento o parete asimmetrico con ottica Wall Washer per esterni in alluminio anodizzato con ghiera in acciaio AISI 316 L, completo di pressacavo.

Recessed floor thread on installations for outside made of painted aluminium with Stainless Steel ferrule AISI 316.

All the spotlights are supplied with recessed box for being installed on the ground; it is important to provide for good draining through gravel positioned under the luminaire.



[Link](#)

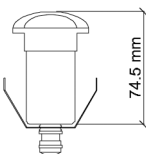
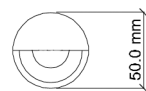
SCHEDA MONTAGGIO
Installation instructions



FOTOMETRIE
Photometries

DIMENSIONI / SIZE

Ø 50mm h74,5mm



OTTICHE / OPTICS

Ottica asimmetrica wall washer
Asymmetrical wallwasher

LUNGHEZZA CAVO / LEVEL OF PROTECTION

Apparecchio fornito di serie con pressacavo e 0.30 metri di cavo
Supplied standard with cable gland and 0.30m exterior cable

MATERIALE / MATERIAL

Ghiera in acciaio inox AISI 316
AISI 316 stainless steel ring

INSTALLAZIONE / INSTALLATION

Fissaggio a terra
Ground fixing

GRADO DI PROTEZIONE / LEVEL OF PROTECTION

IP 65

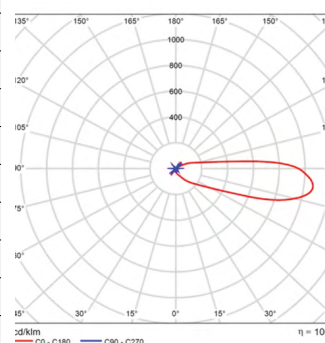
DATI ILLUMINOTECNICI ED ELETTRICI / LIGHTING AND ELECTRICAL DATA

Parametri illuminotecnici elettrici ed ottici, secondo norma CEI EN 62722-2-1

Electrical and optical lighting parameters, according to the CEI EN 62722-2-1 standard

Sorgenti luminose	Light source	Led Star Mini XHP35
Temperatura di colore CCT	Color temperature CCT	3000K 4000K
Indice di resa cromatica Ra	Color Rendering coefficient Ra	>80
Deviazione cromatica Step MacAdam	Color deviation Step MacAdam	3
Potenza	Power	4 W
Flusso luminoso sorgente	Lumen light source	410 lm
Flusso effettivo con ottiche	Actual flux with optics	287 lm
Efficienza luminosa lm/W	Luminous efficiency lm/W	72 lm/W
Voltaggio*	Voltage**	12 V
Temp.Tc@Ta 25°C	Temp.Tc@Ta 25°C	50°C
Temperatura standard ambiente esercizio:	Operating temperature	-20° +45°
Lifetime	Lifetime	L80 35.000h (Ta 25°C)

CDL polar



*Alimentatori a tensione costante o corrente da ordinare separatamente disponibili sia IP20 che IP67 idonei per installazione in esterni.

Disponibile interfaccia di dimmerazione Dali/Push/0-10V/ 1-10V

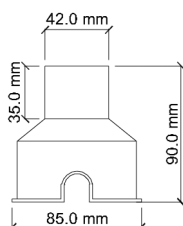
**Constant voltage ballasts to be ordered separately, both IP20 and IP67 are available and suitable for outdoor installation.

Dali/Push/0-10V/ 1-10V dimming interface available

ACCESSORI / ACCESSORIES

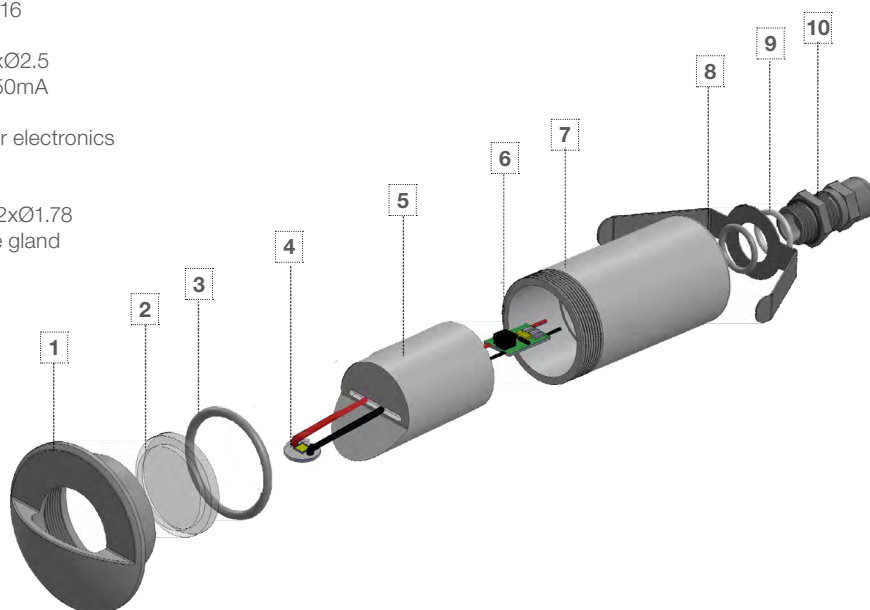
INC FP50

Controcassa in materiale plastico
Recessed box made of plastic material

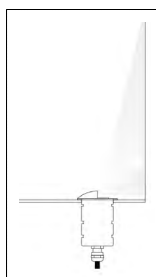
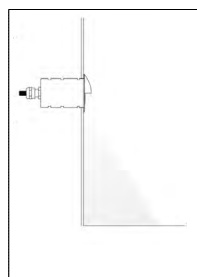


ESPLOSO / EXPLODED

- | | |
|------------------------------|------------------------------|
| 1 - Flangia Aisi 316 | 1 - Flange Aisi 316 |
| 2 - Vetro | 2 - Glass |
| 3 - O-Ring Ø28xØ2.5 | 3 - O-Ring Ø28xØ2.5 |
| 4 - Led Entity 350mA | 4 - Led Entity 350mA |
| 5 - Dissipatore | 5 - Heatsink |
| 6 - Elettronica driver 350mA | 6 - 350mA driver electronics |
| 7 - Corpo spot | 7 - Spot body |
| 8 - Molla | 8 - Spring |
| 9 - O-Ring Ø11.2xØ1.78 | 9 - O-Ring Ø11.2xØ1.78 |
| 10 - Pressacavo ottone Pg7 | 10 - Brass cable gland |



TIPOLOGIE DI INSTALLAZIONE INSTALLATION TYPES



installazione a parete
wall mounting

installazione a pavimento
floor mounting

CERTIFICAZIONI / CERTIFICATIONS

- Soddisfa EN60598-1 e relative note
- CE - conforme EN 60598-1
- Apparecchio calpestabile
- Può essere installato su superfici infiammabili
- Norma CEI 34-156 Classe di isolamento: III
- Conforme alla direttive RAEE - D.lgs 49/2014
- Norma CEI 64-8 e relativi varianti: prodotto può essere installato su superfici infiammabili
- Conforme alla direttive RAEE - D.lgs 49/2014
- IEC/EN 62471:2010 Rischio fotobiologico: RG 1

Satisfies EN60598-1 and related notes
CE - compliance to EN 60598-1
Walkable spotlights
It can be installed on surfaces that are normally flammable
CEI 34-156 Insulation class: III
Compliance to the directive RAEE - D.lgs 49/2014
CEI 34-156 Insulation class: IECI 64-8 and variants: product can be installed on flammable surfaces
Compliance to the directive RAEE - D.lgs 49/2014
IEC/EN 62471:2010 Photobiological risk: RG 1

CODICI / CODE

Codice / Code	T°K
FP 50 A 4W	30K
FP 50 A 4W	40K
Controcassa / Outercasing	
INC FP 50	