

FP50 IP68

Incasso stagno da pavimento per esterni in alluminio anodizzato con ghiera in acciaio AISI 316L, completo di pressacavo, disponibile sia nella versione monocromatica che RGB.

La versione monocolor è completa di elettronica per la gestione in tensione; quella RGB viene gestita mediante una centralina a 350 mA in combinazione con un controller RGB.

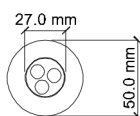
Recessed floor lamp in anodised aluminium with AISI 316L steel frame, complete with cable gland, available in both monochromatic and RGB versions.

The single colour version is complete with electronics for voltage management; the RGB one is managed by a 350 mA control unit in combination with an RGB controller.



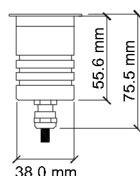
DIMENSIONI / SIZE

Ø 50mm h55,6mm



MATERIALE / MATERIAL

acciaio AISI 316 marine
AISI 316 marine steel



GRADO DI PROTEZIONE / LEVEL OF PROTECTION

IP 68, in conformità EN 60598-2-18
IP68 EN compliance to 60598-2-18

OTTICHE / OPTICS

0° 10° 25° 45° Opal

LUNGHEZZA CAVO / LEVEL OF PROTECTION

Apparecchio fornito di serie con 5 metri di cavo per immersione
Supplied standard with 5m immersion cables

INSTALLAZIONE / INSTALLATION

Disponibile con PG
Alimentatore non incluso
Connection with PG
Remote power pack not included

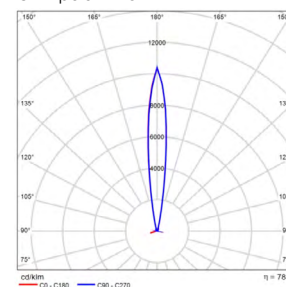
DATI ILLUMINOTECNICI ED ELETTRICI / LIGHTING AND ELECTRICAL DATA

Parametri illuminotecnici elettrici ed ottici, secondo norma CEI EN 62722-2-1

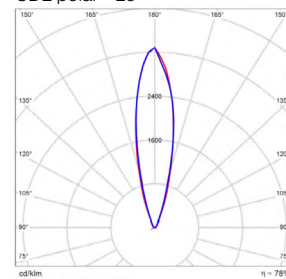
Electrical and optical lighting parameters, according to the CEI EN 62722-2-1 standard

Sorgenti luminose	Light source	3 Led Seoul Z5
Temperatura di colore CCT	Color temperature CCT	3000K 4000K
Indice di resa cromatica Ra	Color Rendering coefficient Ra	>80
Deviazione cromatica Step MacAdam	Color deviation Step MacAdam	3
Potenza	Power	4.5 W
Flusso luminoso sorgente	Lumen light source	420 lm
Flusso effettivo con ottiche	Actual flux with optics	328 lm
Efficienza luminosa lm/W	Luminous efficiency lm/W	73 lm/W
Flusso effettivo opal	Opal actual flux	294 lm
Efficienza luminosa opal lm/W	Opal luminous efficiency lm/W	65 lm/W
Voltaggio*	Voltage**	12 V
Temperatura di colore CCT	Color temperature CCT	RGB
Indice di resa cromatica Ra	Color Rendering coefficient Ra	>80
Deviazione cromatica Step MacAdam	Color deviation Step MacAdam	3
Potenza	Power	4.5 W
Corrente di alimentazione*	Supply current**	350 mA
Temp.Tc@Ta 25°C	Temp.Tc@Ta 25°C	85°C
Temperatura standard ambiente esercizio:	Operating temperature	-20° +45°
Lifetime	Lifetime	L80 35.000h (Ta 25°C)

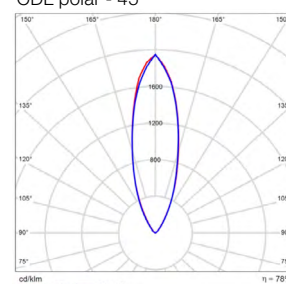
CDL polar - 10°



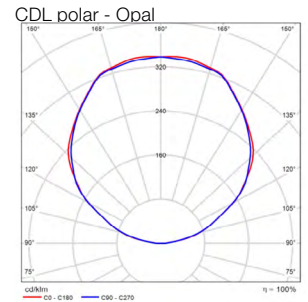
CDL polar - 25°



CDL polar - 45°



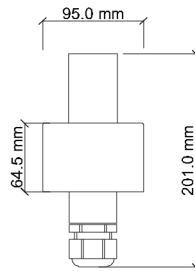
*Alimentatori a tensione costante o corrente da ordinare separatamente disponibili sia IP20 che IP67 idonei per installazione in esterni.
 Disponibile interfaccia di dimmerazione DALI/DMX/0-10V/ 1-10V, per la versione monocromatica; PWM/DMX/DALI per RGB.
 Collegamenti tra alimentatore/strip led tramite cavi con connettori IP68 per la versione ad immersione.
 **Constant voltage ballasts to be ordered separately, both IP20 and IP67 are available and suitable for outdoor installation.
 DALI/DMX/0-10V/ 1-10V dimming interface available for monochromatic light; PWM/DMX/DALI for RGB
 The ballast and led strip are connected via cables with IP68 for immersion version



ACCESSORI /ACCESSORIES

INC FP50 IP58

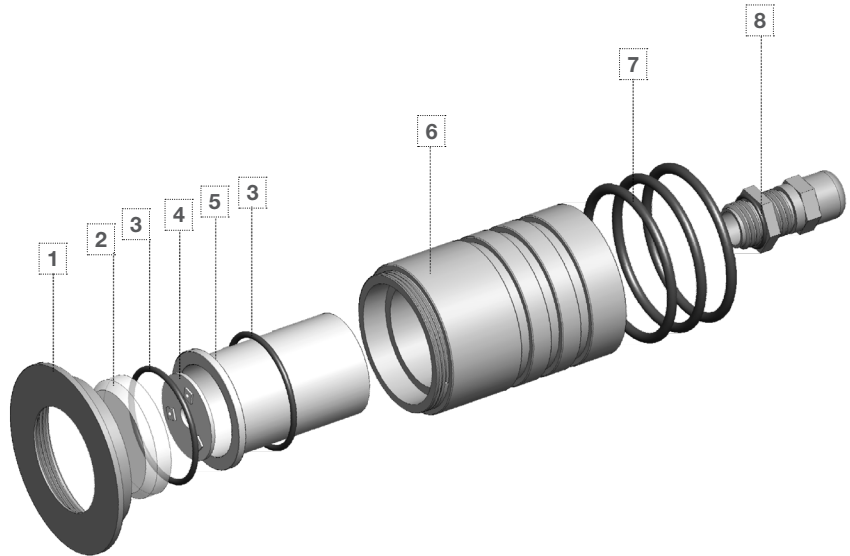
Controcassa in materiale plastico
 Recessed box made of plastic material



ESPLOSO /EXPLODED

- 1 - Flangia Aisi 316
- 2 - Vetro trasparente
- 3 - O-Ring Ø27x1.5 NBR
- 4 - Led Bridgelux Vero
- 5 - Dissipatore
- 6 - Corpo spot
- 7 - O-Ring Ø35x2.5 NBR
- 8 - Pressacavo ottone Pg7

- 1 - Flange Aisi 316
- 2 - Transparent glass
- 3 - O-Ring Ø27x1.5 NBR
- 4 - Led Bridgelux Vero
- 5 - Heatsink
- 6 - Spot body
- 7 - O-Ring Ø35x2.5 NBR
- 8 - Brass cable gland



CERTIFICAZIONI / CERTIFICATIONS

- Soddisfa EN60598-1 e relative note
- CE - conforme EN 60598-1
- Apparecchio calpestable
- Può essere installato su superfici infiammabili
- Norma CEI 34-156 Classe di isolamento: III
- Conforme alla direttive RAEE - D.lgs 49/2014
- Norma CEI 64-8 e relativi varianti: prodotto può essere installato su superfici infiammabili
- Conforme alla direttive RAEE - D.lgs 49/2014
- IEC/EN 62471:2010 Rischio fotobiologico: RG 1

Satisfies EN60598-1 and related notes
 CE - compliance to EN 60598-1
 Walkable spotlights
 It can be installed on surfaces that are normally flammable
 CEI 34-156 Insulation class: III
 Compliance to the directive RAEE - D.lgs 49/2014
 CEI 34-156 Insulation class: ICEI 64-8 and variants: product can be installed on flammable surfaces
 Compliance to the directive RAEE - D.lgs 49/2014
 IEC/EN 62471:2010 Photobiological risk: RG 1

RESIN TEST REPORT

TEST	REF. METHOD	TEST CONDITIONS	RESULTS
OUTDOOR RESISTANCE			
Florida Test	SAE J 1976	Direct Inland ,45°South	Good (after 2 years)
Arizona Test	SAE J 1976	Direct Weathering, 45° South	Good (after 2 years)
Xenon WOM	SAE J 1960-89 2000h	65°C - cycle 102minUV + 18 min. UV/waterspray	No color change, minimal gloss change
Weatherometer QUV-B	SAE J 2020	1000h (8hUV 60°-4hcond.50°C)	No color change, minimal gloss change
Weatherometer QUV-A	SAE J 2020	2000h (8hUV 70°-4hcond.50°C)	No color change, minimal gloss change
WATER AND CHEMICALS RESISTANCE			
Fuel Resistance	G.M.6073	Immersion	No gloss change/No degradation
Acid Resistance	MS-CG12	Spot Test 0.5-10% conc.	No gloss change/No degradation
Solvent Resistance	GM 6121 M	Various types of used chemicals	No gloss change/No degradation
Water Immersion	WSK-M3G178	240 h.@ 45°C	No gloss change/No degradation
Salt Spray Resistance	ASTM B117-95	2000 h @38°C 5% NaCl	No gloss change/No degradation
Humidity Resistance	MS-CG12	250h @ 40°C 100% R.H.	No gloss change/No degradation
Environmental Cycle	G.M.6073	Three Cycles	No gloss change/No degradation
HEAT RESISTANCE			
Heat Resistance	MS-CG12	250 h @ 80°C	No gloss change/No degradation
High Temperature Resistance	G.M.6073	60 min. @ 93°C	No gloss change/No degradation
Thermal Shock	ESK-M99P16-A:3.5.5	16h. -40°C+ water@70°C/10cycles	No gloss change/No degradation
ABRASION RESISTANCE			
Stone Chip Resistance	SAE J400:85	0.47L of 250-300 graded gravel fired @ sample @480KPa in 5-10s	Chipping rating 10- No chipping to substrate
FLAMMABILITY RESISTANCE			
Flammability resistance	FMVSS 302	ISO 3795	Flame self extinguishing
ELECTRICAL PROPERTIES			
Surface Resistivity	ASTM D257	500 V – spec. thickness 2 mm	2 x 10E15 Ohm
Volume Resistivity	ASTM D257	500 V – spec. thickness 2 mm	1 x 10E15 Ohm cm

CODICI / CODE

Codice / Code	Ghiera / Ferrule	Ottica / Optic	T°K	Attacco / Connection
FP50 IP68	X	0	30K	PG
FP50 IP68	X	0	40K	PG
FP50 IP68	X	0	RGB	PG
FP50 IP68	X	10	30K	PG
FP50 IP68	X	10	40K	PG
FP50 IP68	X	10	RGB	PG
FP50 IP68	X	25	30K	PG
FP50 IP68	X	25	40K	PG
FP50 IP68	X	25	RGB	PG
FP50 IP68	X	45	30K	PG
FP50 IP68	X	45	40K	PG
FP50 IP68	X	45	RGB	PG
FP50 IP68	X	OP	30K	PG
FP50 IP68	X	OP	40K	PG
FP50 IP68	X	OP	RGB	PG

Controcassa / Outercasing

INC FP50 IP68