

## SPOT MAXI AISI

Proiettore a led ad alto rendimento per immersione permanente, realizzato in acciaio AISI 316 marine, con resina di protezione led eco resistente\*, disponibile sia nella versione monocromatica che RGB. Corpo completo di staffa per l'installazione.

High performance led projectors for staying permanently underwater, made of AISI 316 marine steel, with led protection resin Eco resistant\*, available either in monochrome version or RGB. Both products are supplied with bracket for installation.

\*consultare report dei test effettuati in allegato  
\*see attached test report



Link

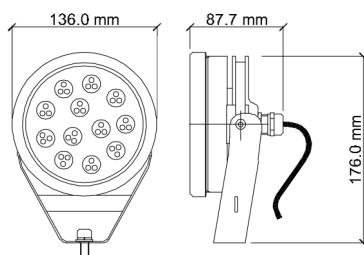
Scheda montaggio  
Installation instructions



Fotometrie  
Photometries

### DIMENSIONI / SIZE

Ø 136x87.7xh176mm



### MATERIALE / MATERIAL

acciaio AISI 316 marine  
AISI 316 marine steel

### OTTICHE / OPTICS

10° 25° 45°

### LUNGHEZZA CAVO / LEVEL OF PROTECTION

Apparecchio fornito di serie con 5 metri di cavo per immersione (2x0.50 o 5x0.50)  
Supplied standard with 5m underwater cable (2x0.50 or 5x0.50)

### GRADO DI PROTEZIONE / LEVEL OF PROTECTION

IP 68, in conformità EN 60598-2-18  
IP68 EN compliance to 60598-2-18

### INSTALLAZIONE / INSTALLATION

Fissaggio a terra, parete  
Applique, ground fixing

### DATI ILLUMINOTECNICI ED ELETTRICI / LIGHTING AND ELECTRICAL DATA

#### Parametri illuminotecnici elettrici ed ottici, secondo norma CEI EN 62722-2-1

#### Electrical and optical lighting parameters, according to the CEI EN 62722-2-1 standard

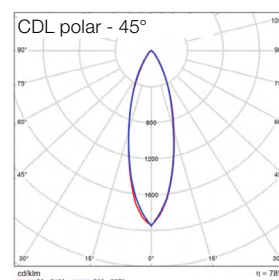
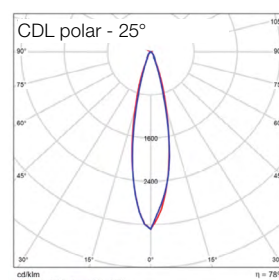
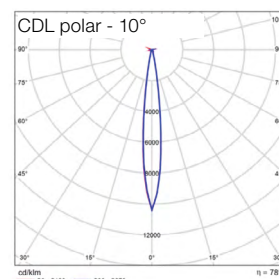
Sorgenti luminose	Light source	36 Led Seoul Z5
Temperatura di colore CCT	Color temperature CCT	3000K 4000K
Indice di resa cromatica Ra	Color Rendering coefficient Ra	>80
Deviazione cromatica Step MacAdam	Color deviation Step MacAdam	3
Flusso luminoso sorgente	Lumen light source	5040 lm
Flusso effettivo	Actual flux	3930 lm
Potenza	Power	54 W
Efficienza luminosa lm/W	Luminous efficiency lm/W	72 lm/W
Voltaggio*	Voltage**	10V DC
Temperatura di colore	Color temperature	RGB
Potenza	Power	54 W/m
Voltaggio*	Voltage**	10V DC
Temp.Tc@Ta 25°C	Temp.Tc@Ta 25°C	85°C
Temperatura standard ambiente esercizio:	Operating temperature	-20° +45°
Lifetime	Lifetime	L80 35.000h (Ta 25°C)

\*Alimentatori a tensione costante da ordinare separatamente disponibili sia IP20 che IP67 idonei per installazione in esterni. Disponibile interfaccia di dimmerazione DALI/DMX/0-10V/ 1-10V, per la versione monocromatica; PWM/DMX/DALI per RGB.

Collegamenti tra alimentatore/strip led tramite cavi con connettori IP68 per la versione ad immersione.

\*\*Constant voltage ballasts to be ordered separately, both IP20 and IP67 are available and suitable for outdoor installation. DALI/DMX/0-10V/ 1-10V dimming interface available for monochrome light; PWM/DMX/DALI for RGB

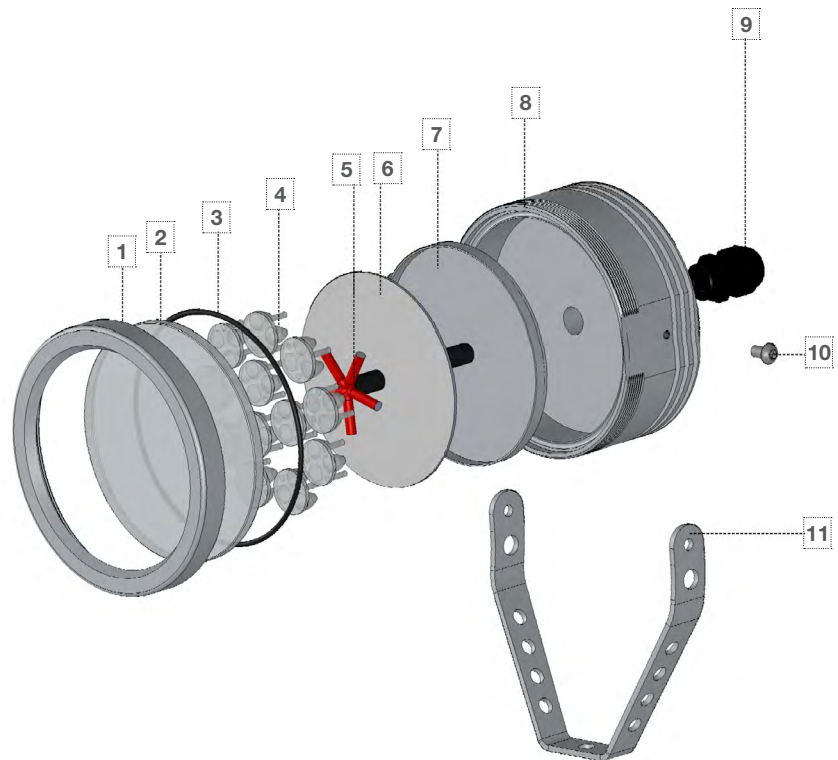
The ballast and led strip are connected via cables with IP68 for immersion version



## ESPLOSO /EXPLODED

- 1 - Flangia spot
- 2 - Vetro temperato monosatinato
- 3 - O-ring Ø113.97x2.62
- 4 - Lente micro trio
- 5 - Cavo 2x0.5 silicone neoprene - nero
- 6 - Basetta
- 7 - Bicchiere resinatura
- 8 - Corpo spot
- 9 - Pressacavo in plastica PG11
- 10 - Vite M6x10 testa bombata
- 11 - Staffa

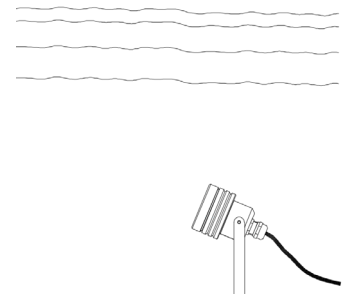
- 1 - Fixing ferrule
- 2 - Mono glazed tempered glass
- 3 - O-ring Ø113.97x2.62
- 4 - Micro trio lens
- 5 - 2x0.5 silicone neoprene cable - black
- 6 - Base led 3x9W
- 7 - Resin box
- 8 - Spot body
- 9 - Plastic cable ground PG11
- 10 - M6x10 rounded head screw
- 11 - Bracket



## ATTENZIONE / CAUTION

L'apparecchio deve essere utilizzato esclusivamente in immersione permanente.  
L'accensione del faretto fuori dall'acqua deve essere effettuata solamente per il tempo minimo necessario al test dell'impianto (2-3 minuti)

The appliance must only be used in permanent immersion.  
The lighting of the spotlight out of the water must be carried out only for the minimum time necessary for the system test (2-3 minutes)



## CODICI / CODE

Codice / Code	Ottica / Optic	T°K
SPOT MAXI AS	10	30K
SPOT MAXI AS	10	40K
SPOT MAXI AS	10	RGB
SPOT MAXI AS	25	30K
SPOT MAXI AS	25	40K
SPOT MAXI AS	25	RGB
SPOT MAXI AS	45	30K
SPOT MAXI AS	45	40K
SPOT MAXI AS	45	RGB

CERTIFICAZIONI / CERTIFICATIONS

- |  |  |
|--|--|
| <ul style="list-style-type: none"> <li>• Soddisfa EN60598-1 e relative note</li> <li>• CE - conforme EN 60598-1</li> <li>• Apparecchio calpestabile</li> <li>• Può essere installato su superfici infiammabili</li> <li>• Norma CEI 34-156 Classe di isolamento: III</li> <li>• Conforme alla direttive RAEE - D.lgs 49/2014</li> <li>• Norma CEI 64-8 e relativi varianti: prodotto può essere installato su superfici infiammabili</li> <li>• Conforme alla direttive RAEE - D.lgs 49/2014</li> <li>• IEC/EN 62471:2010 Rischio fotobiologico: RG 1</li> </ul> | <p>Satisfies EN60598-1 and related notes<br/> CE - compliance to EN 60598-1<br/> Walkable spotlights<br/> It can be installed on surfaces that are normally flammable<br/> CEI 34-156 Insulation class: III<br/> Compliance to the directive RAEE - D.lgs 49/2014<br/> CEI 34-156 Insulation class: ICEI 64-8 and variants: product can be installed on flammable surfaces<br/> Compliance to the directive RAEE - D.lgs 49/2014<br/> IEC/EN 62471:2010 Photobiological risk: RG 1</p> |
|--|--|

RESIN TEST REPORT

TEST	REF. METHOD	TEST CONDITIONS	RESULTS
<b>OUTDOOR RESISTANCE</b>			
Florida Test	SAE J 1976	Direct Inland ,45°South	Good (after 2 years )
Arizona Test	SAE J 1976	Direct Weathering, 45° South	Good (after 2 years )
Xenon WOM	SAE J 1960-89 2000h	65°C - cycle 102minUV + 18 min. UV/waterspray	No color change, minimal gloss change
Weatherometer QUV-B	SAE J 2020	1000h (8hUV 60°-4hcond.50°C)	No color change, minimal gloss change
Weatherometer QUV-A	SAE J 2020	2000h (8hUV 70°-4hcond.50°C)	No color change, minimal gloss change
<b>WATER AND CHEMICALS RESISTANCE</b>			
Fuel Resistance	G.M.6073	Immersion	No gloss change/No degradation
Acid Resistance	MS-CG12	Spot Test 0.5-10% conc.	No gloss change/No degradation
Solvent Resistance	GM 6121 M	Various types of used chemicals	No gloss change/No degradation
Water Immersion	WSK-M3G178	240 h.@ 45°C	No gloss change/No degradation
Salt Spray Resistance	ASTM B117-95	2000 h @38°C 5% NaCl	No gloss change/No degradation
Humidity Resistance	MS-CG12	250h @ 40°C 100% R.H.	No gloss change/No degradation
Environmental Cycle	G.M.6073	Three Cycles	No gloss change/No degradation
<b>HEAT RESISTANCE</b>			
Heat Resistance	MS-CG12	250 h @ 80°C	No gloss change/No degradation
High Temperature Resistance	G.M.6073	60 min. @ 93°C	No gloss change/No degradation
Thermal Shock	ESK-M99P16-A:3.5.5	16h. -40°C+ water@70°C/10cycles	No gloss change/No degradation
<b>ABRASION RESISTANCE</b>			
Stone Chip Resistance	SAE J400:85	0.47L of 250-300 graded gravel fired @ sample @480KPa in 5-10s	Chipping rating 10- No chipping to substrate
<b>FLAMMABILITY RESISTANCE</b>			
Flammability resistance	FMVSS 302	ISO 3795	Flame self extinguishing
<b>ELECTRICAL PROPERTIES</b>			
Surface Resistivity	ASTM D257	500 V – spec. thickness 2 mm	2 x 10E15 Ohm
Volume Resistivity	ASTM D257	500 V – spec. thickness 2 mm	1 x 10E15 Ohm cm