

SPOT MIDI AISI

Proiettore a led ad alto rendimento per immersione permanente, realizzato in acciaio AISI 316 marine, con resina di protezione led eco resistente*, disponibile sia nella versione monocromatica che RGB. Corpo completo di staffa per l'installazione.

High performance led projectors for staying permanently underwater, made of AISI 316 marine steel, with led protection resin Eco resistant*, available either in monochrome version or RGB. Both products are supplied with bracket for installation.

*consultare report dei test effettuati in allegato
*see attached test report

[Link](#)

Scheda montaggio
Installation instructions

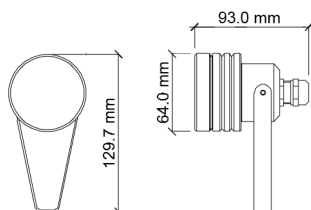


Fotometrie
Photometries



DIMENSIONI / SIZE

Ø 64x93xh129,7mm



OTTICHE / OPTICS

10° 25° 45°
RGBW - 20° 60°

MATERIALE / MATERIAL

acciaio AISI 316 marine
AISI 316 marine steel

LUNGHEZZA CAVO / LEVEL OF PROTECTION

Apparecchio fornito di serie con 5 metri di cavo per immersione (2x0.50 o 5x0.50)
Supplied standard with 5m underwater cable (2x0.50 or 5x0.50)

GRADO DI PROTEZIONE / LEVEL OF PROTECTION

IP 68, in conformità EN 60598-2-18
IP68 EN compliance to 60598-2-18

INSTALLAZIONE / INSTALLATION

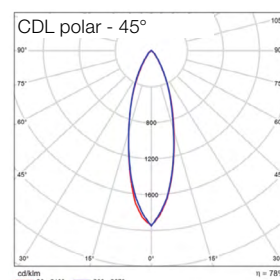
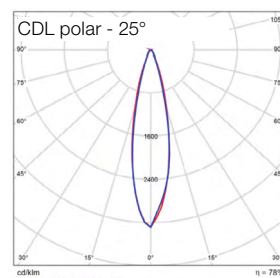
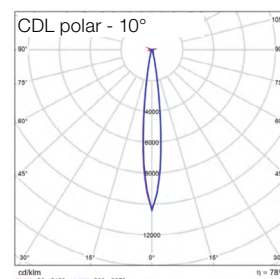
Fissaggio a terra, parete
Applique, ground fixing

DATI ILLUMINOTECNICI ED ELETTRICI / LIGHTING AND ELECTRICAL DATA

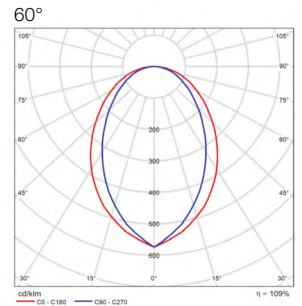
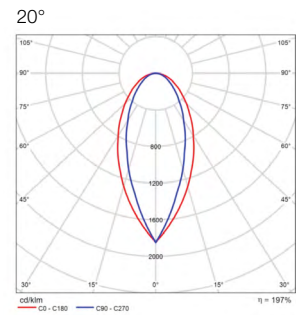
Parametri illuminotecnici elettrici ed ottici, secondo norma CEI EN 62722-2-1

Electrical and optical lighting parameters, according to the CEI EN 62722-2-1 standard

Sorgenti luminose	Light source	9 Led Nichia
Temperatura di colore CCT	Color temperature CCT	3000K 4000K
Indice di resa cromatica Ra	Color Rendering coefficient Ra	>80
Deviazione cromatica Step MacAdam	Color deviation Step MacAdam	3
Flusso luminoso sorgente	Lumen light source	1410 lm
Flusso effettivo	Actual flux	1100 lm
Potenza	Power	10.8 W
Efficienza luminosa lm/W	Luminous efficiency lm/W	101 lm/W
Voltaggio*	Voltage**	12V DC
Temperatura di colore	Color temperature	RGB
Potenza	Power	10.8 W
Voltaggio*	Voltage**	12V DC



Temperatura di colore	Color temperature	RGBW (White 3000K)
Flusso luminoso sorgente	Lumen light source	Red 288 lm
		Green 591 lm
		Blue 99 lm
		White 450 lm
Flusso effettivo	Actual flux	Red 224 lm
		Green 460 lm
		Blue 77 lm
		White 351 lm
Potenza	Power	10.8 W
Voltaggio*	Voltage**	12V DC
Temp.Tc@Ta 25°C	Temp.Tc@Ta 25°C	85°C
Temperatura standard ambiente esercizio:	Operating temperature	-20° +45°
Lifetime	Lifetime	L80 35.000h (Ta 25°C)



*Alimentatori a tensione costante da ordinare separatamente disponibili sia IP20 che IP67 idonei per installazione in esterni. Disponibile interfaccia di dimmerazione DALI/DMX/0-10V/ 1-10V, per la versione monocromatica; PWM/DMX/DALI per RGB.

Collegamenti tra alimentatore/strip led tramite cavi con connettori IP68 per la versione ad immersione.

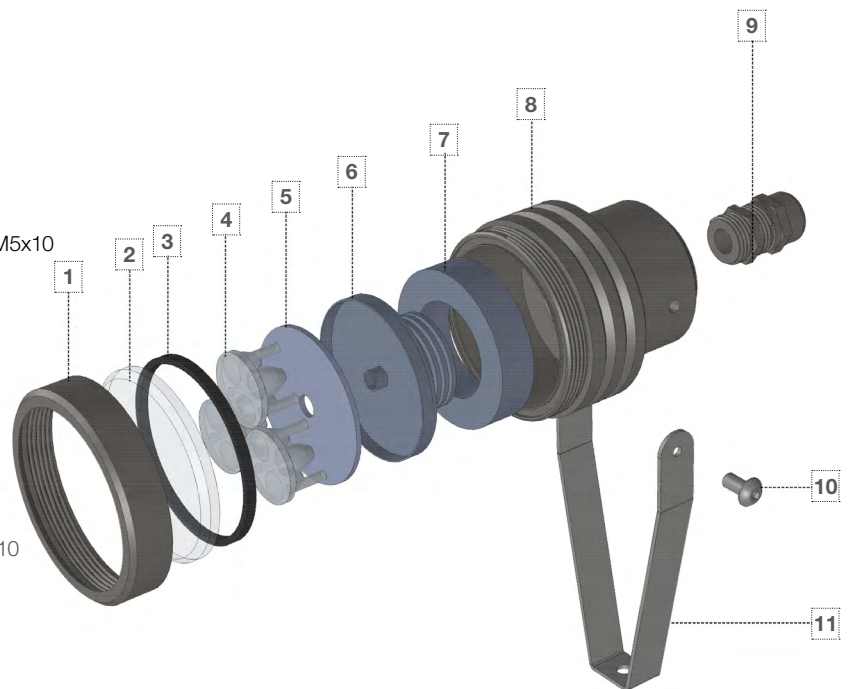
**Constant voltage ballasts to be ordered separately, both IP20 and IP67 are available and suitable for outdoor installation. DALI/DMX/0-10V/ 1-10V dimming interface available for monochromatic light; PWM/DMX/DALI for RGB

The ballast and led strip are connected via cables with IP68 for immersion version

ESPLOSO /EXPLODED

- 1 - Ghiera spot
- 2 - Vetro temperato monosatinato
- 3 - Guarnizione silconica
- 4 - Lente micro trio
- 5 - Basetta led 3x9W
- 6 - Dissipatore
- 7 - Distanziale in alluminio
- 8 - Corpo spot
- 9 - Pressacavo in plastica PG9
- 10 - Vite a testa mezza tonda ed esagono incassato M5x10
- 11 - Staffa

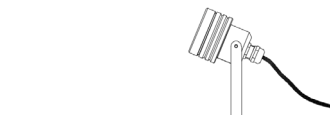
- 1 - Fixing ferrule
- 2 - Mono glazed tempered glass
- 3 - Silicon gasket
- 4 - Micro trio lens
- 5 - Base led 3x9W
- 6 - Heatsink
- 7 - Aluminum spacer
- 8 - Spot body
- 9 - Plastic cable ground PG9
- 10 - Half round head screw and hexagon socket M5x10
- 11 - Bracket



ATTENZIONE / CAUTION

L'apparecchio deve essere utilizzato esclusivamente in immersione permanente.
L'accensione del faretto fuori dall'acqua deve essere effettuata solamente per il tempo minimo necessario al test dell'impianto (2-3 minuti)

The appliance must only be used in permanent immersion.
The lighting of the spotlight out of the water must be carried out only for the minimum time necessary for the system test (2-3 minutes)



CERTIFICAZIONI / CERTIFICATIONS

- | | |
|--|---|
| • Soddisfa EN60598-1 e relative note | Satisfies EN60598-1 and related notes |
| • CE - conforme EN 60598-1 | CE - compliance to EN 60598-1 |
| • Apparecchio calpestabile | Walkable spotlights |
| • Può essere installato su superfici infiammabili | It can be installed on surfaces that are normally flammable |
| • Norma CEI 34-156 Classe di isolamento: III | CEI 34-156 Insulation class: III |
| • Conforme alla direttive RAEE - D.lgs 49/2014 | Compliance to the directive RAEE - D.lgs 49/2014 |
| • Norma CEI 64-8 e relativi varianti: prodotto può essere installato su superfici infiammabili | CEI 34-156 Insulation class: ICEI 64-8 and variants: product can be installed on flammable surfaces |
| • Conforme alla direttive RAEE - D.lgs 49/2014 | Compliance to the directive RAEE - D.lgs 49/2014 |
| • IEC/EN 62471:2010 Rischio fotobiologico: RG 1 | IEC/EN 62471:2010 Photobiological risk: RG 1 |

CODICI / CODE

Codice / Code	Ottica / Optic	T°K
SPOT MIDI AS	10	30K
SPOT MIDI AS	10	40K
SPOT MIDI AS	10	RGB
SPOT MIDI AS	25	30K
SPOT MIDI AS	25	40K
SPOT MIDI AS	25	RGB
SPOT MIDI AS	45	30K
SPOT MIDI AS	45	40K
SPOT MIDI AS	45	RGB
SPOT MIDI AS	20	RGBW
SPOT MIDI AS	60	RGBW

RESIN TEST REPORT

TEST	REF. METHOD	TEST CONDITIONS	RESULTS
OUTDOOR RESISTANCE			
Florida Test	SAE J 1976	Direct Inland ,45°South	Good (after 2 years)
Arizona Test	SAE J 1976	Direct Weathering, 45° South	Good (after 2 years)
Xenon WOM	SAE J 1960-89 2000h	65°C - cycle 102minUV + 18 min. UV/waterspray	No color change, minimal gloss change
Weatherometer QUV-B	SAE J 2020	1000h (8hUV 60°-4hcond.50°C)	No color change, minimal gloss change
Weatherometer QUV-A	SAE J 2020	2000h (8hUV 70°-4hcond.50°C)	No color change, minimal gloss change
WATER AND CHEMICALS RESISTANCE			
Fuel Resistance	G.M.6073	Immersion	No gloss change/No degradation
Acid Resistance	MS-CG12	Spot Test 0.5-10% conc.	No gloss change/No degradation
Solvent Resistance	GM 6121 M	Various types of used chemicals	No gloss change/No degradation
Water Immersion	WSK-M3G178	240 h.@ 45°C	No gloss change/No degradation
Salt Spray Resistance	ASTM B117-95	2000 h @38°C 5% NaCl	No gloss change/No degradation
Humidity Resistance	MS-CG12	250h @ 40°C 100% R.H.	No gloss change/No degradation
Environmental Cycle	G.M.6073	Three Cycles	No gloss change/No degradation
HEAT RESISTANCE			
Heat Resistance	MS-CG12	250 h @ 80°C	No gloss change/No degradation
High Temperature Resistance	G.M.6073	60 min. @ 93°C	No gloss change/No degradation
Thermal Shock	ESK-M99P16-A:3.5.5	16h. -40°C+ water@70°C/10cycles	No gloss change/No degradation
ABRASION RESISTANCE			
Stone Chip Resistance	SAE J400:85	0.47L of 250-300 graded gravel fired @ sample @480KPa in 5-10s	Chipping rating 10- No chipping to substrate
FLAMMABILITY RESISTANCE			
Flammability resistance	FMVSS 302	ISO 3795	Flame self extinguishing
ELECTRICAL PROPERTIES			
Surface Resistivity	ASTM D257	500 V – spec. thickness 2 mm	2 x 10E15 Ohm
Volume Resistivity	ASTM D257	500 V – spec. thickness 2 mm	1 x 10E15 Ohm cm